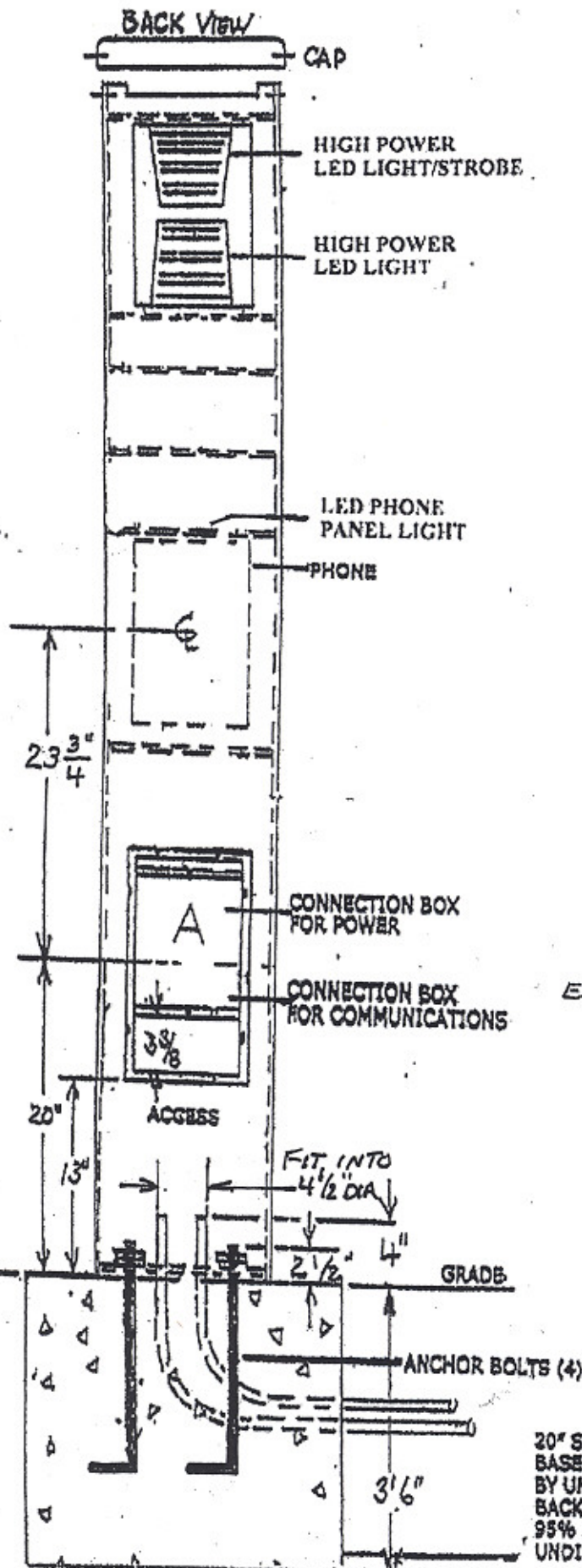


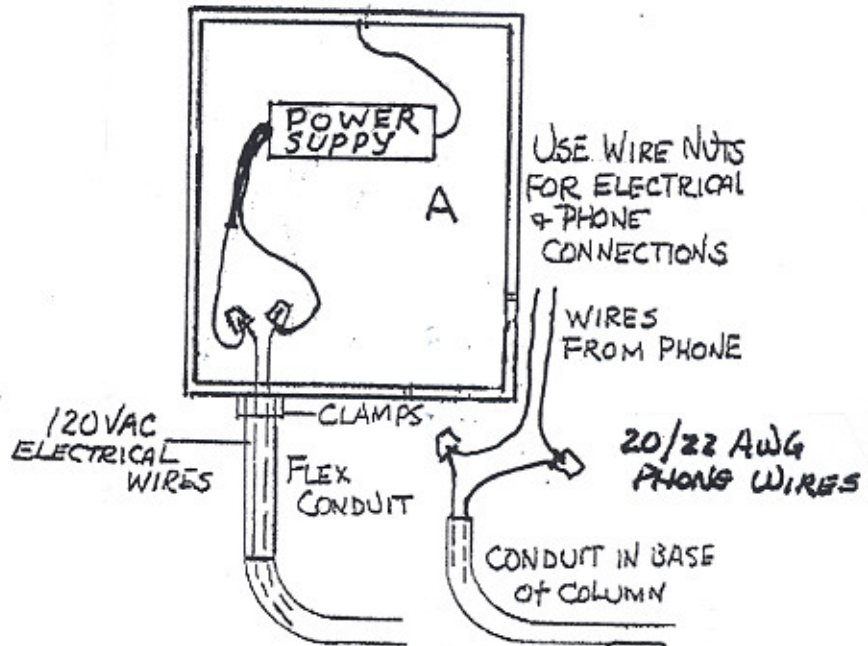
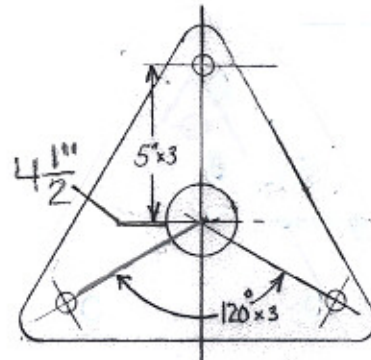
PLC 7A LED INSTALLATION



POWER CONSUMPTION
 200 WATTS - 120 VAC
 300 WATTS WITH HEATER

11 1/2" - 108" TRIANGLE COLUMN
 STAINLESS STEEL

BOLT LAYOUT FOR COLUMN
 (3) 5/8 - 16" ANCHOR BOLTS
 TEMPLATE PROVIDED



PROVIDE ABOUT 18" LENGTH OF PVC COATED FLEXIBLE CONDUIT FROM ELECTRICAL CONDUIT IN BASE TO CONNECTION BOX IN COLUMN. COLUMN IS PRE-WIRED.

RAMTEL CORP.
 115 Railroad Ave.
 Johnston, RI 02919
 401-231-3340

20" SQ. CONCRETE COLUMN BASE SHALL BE SURROUNDED BY UNDISTURBED SOIL OR BACK FILL COMPACTED TO 95% DENSITY OF SURROUNDING UNDISTURBED SOIL.

8/11