

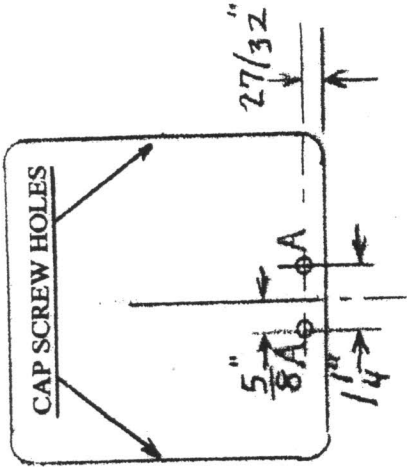


115 Railroad Ave
Johnston, RI 02819

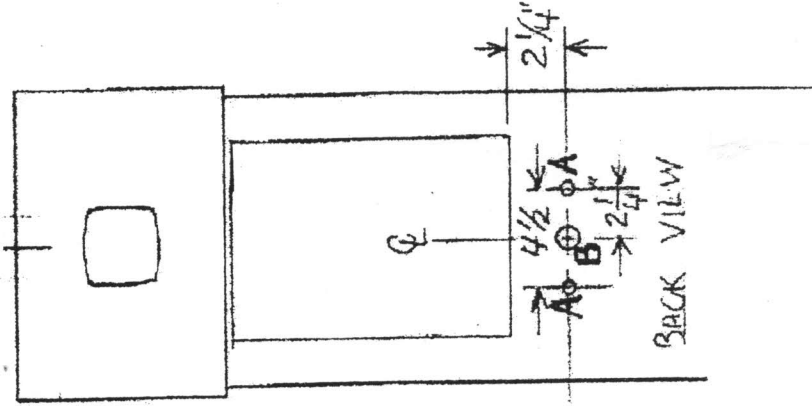
To Assemble Camera Bracket

- 1) Camera Mount attaches below Strobe Light using 1/4-20 Hex Screws (2) and Flat Washers (2)
- 2) Secure Angle Bracket to Top Cap and Camera Mount using 1/4-20 Hex Screws (4) & Flat Washers (4)
- 3) BE SURE TO INSTALL THE (3) RUBBER GASKETS PROVIDED

1. 1/4-20 Hex Screws (6)
2. Rubber Gaskets (3)
3. Flat Washers (6)



HOLE: A - 1/4 - 20" Tap (4)
B - 1/2" Dia. (1)



A) 1/4-20" TAP (4)
B) 1/2" DIA (1)

