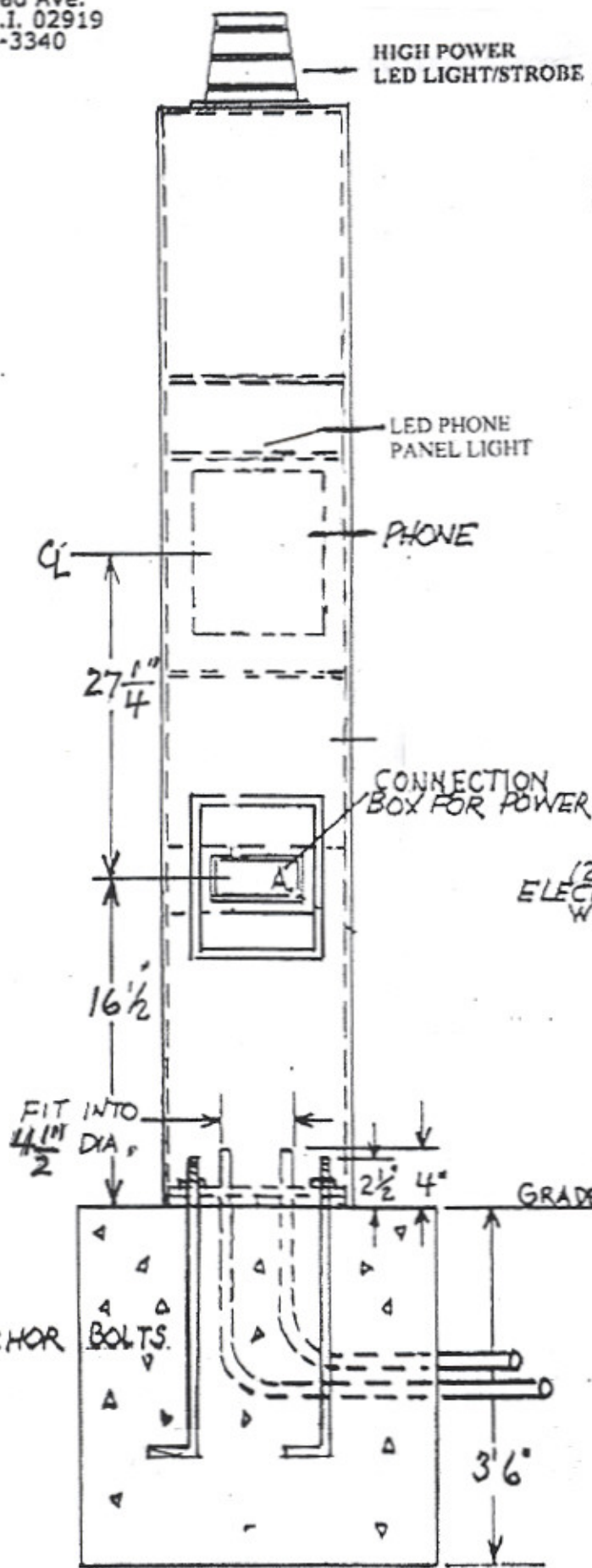


RAMTEL CORP.
115 Railroad Ave.
Johnston, R.I. 02919
401-231-3340

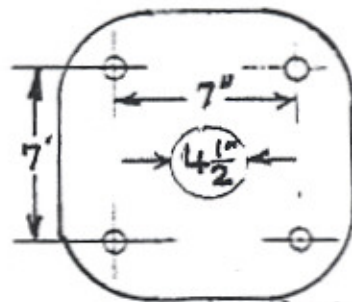
BACK VIEW



PLC 10A LED INSTALLATION

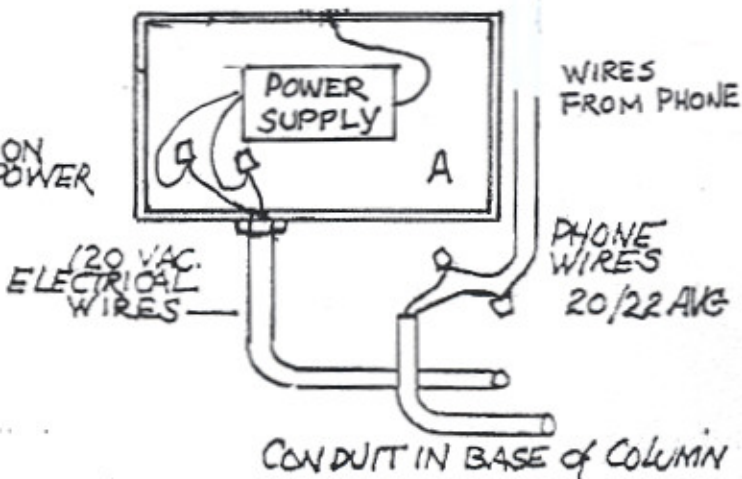
STAINLESS STEEL COLUMN
COLUMN HEIGHT 92"
WITH LIGHT 98 7/8"

BOLT LAYOUT FOR COLUMN
(4) 5/8" L BOLTS x 16" LONG



TEMPLATE PROVIDED

POWER CONSUMPTION
50 WATTS - 120 VAC
150 WATTS WITH HEATER



CONDUIT IN BASE OF COLUMN

PROVIDE ABOUT 18" LENGTH OF
PVC COATED FLEXIBLE CONDUIT
FROM CONDUIT IN BASE TO
CONNECTION BOX IN COLUMN
COLUMN IS PRE WIRED

20" SQ CONCRETE COLUMN BASE
SHALL BE SURROUNDED BY
UNDISTURBED SOIL OR BACK
FILL COMPACTED TO 95%
DENSITY OF SURROUNDING
UNDISTURBED SOIL